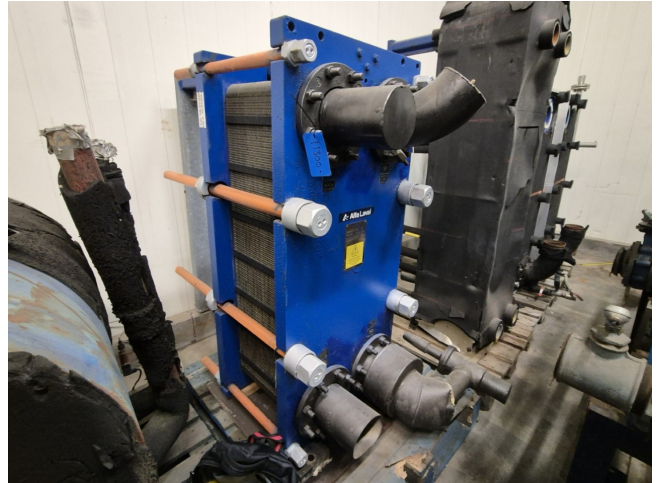


# Alfa Laval MK15-BWFGR

## Specifications

Marque	Alfa Laval
Type	MK15-BWFGR
Product type	PHE
Refrigerant / Medium	Glycol / Ammonia (NH3)
Capacité kW	703,1
Surface (m2)	61 m <sup>2</sup>
Layers / Cassettes	122
Volume	153,7 dm <sup>3</sup>
Stock	1



## Description

### Used Alfa Laval MK15-BWFGR

Used Alfa Laval MK15-BWFGR plate heat exchanger on Glycol / Ammonia (NH3) with 122 plates. Capacity of 703,1 kW at hot side out/in 12°C/7°C and an cold side evaporating temperature of 2°C.

